



Seabrook McKenzie

Newsletter Spring 2022

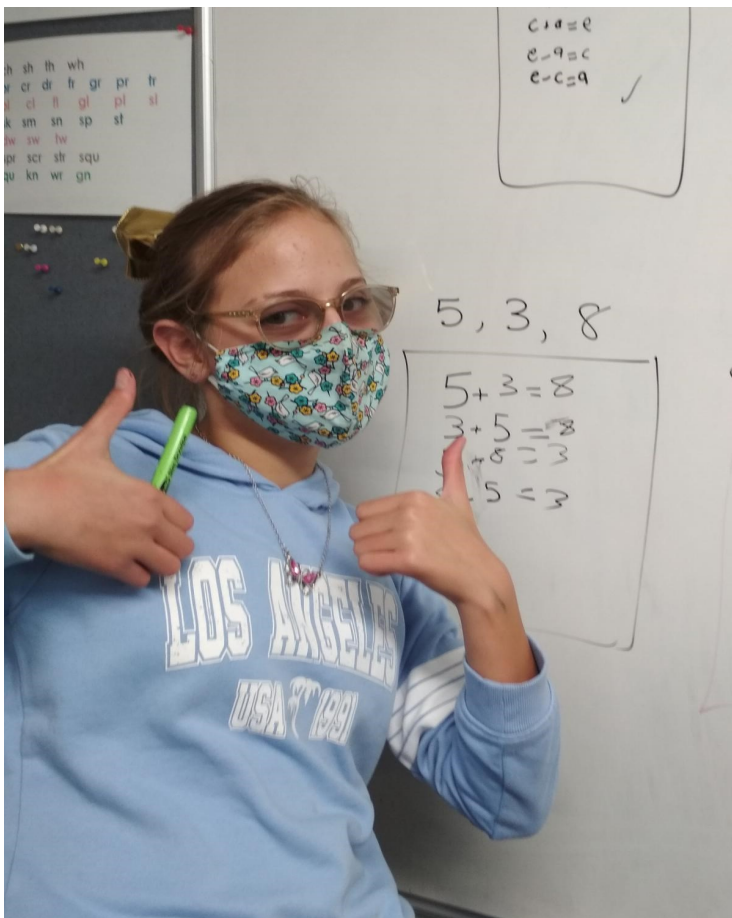
A world where those with learning difficulties experience success—He ao e angitu ai te hunga e uaua ana te ako

Welcome to the Seabrook McKenzie newsletter! We've had so much good news that it's another double edition from us. It's wonderful to hear from so many people, clients old and new, how we have helped them progress in their learning and journey through life.

The only way we can provide our specialist services at low cost is with the help of grants and donations. We couldn't do this without our supporters, so please consider all these stories a big THANK YOU to you and a confirmation of the difference you have made to those with Specific Learning Disabilities.



A snapshot of one of our small group teaching classes. Groups of up to three students are taught by our specialist teacher Mary, one to four mornings each week, with the support of their school.



A student who recently participated in our Three Week Intensive course. See inside for more information about the course!

SUPPORT FOR ADULTS

Rachel (not her real name) is a tertiary student who was in the final stages of an advanced degree when she came to be assessed at the Centre. Although Rachel was very capable, due to inflexible examination processes, recent evaluations were not revealing the hard work she had done, and she was at risk of having to unnecessarily repeat a year.

After Rachel's assessment, our psychologist provided a letter of support, which student advisors were able to use as part of advocating for her with the examiners. Grateful for the support she received, Rachel emailed her assessor with an update. She had comfortably passed the final progress test and was delighted to be about to start work in her chosen field.

The Seabrook McKenzie Centre is a charitable trust (Charities Commission Registration CC25330).

Phone (03) 381 5383 | Email info@seabrookmckenzie.net | Visit www.seabrookmckenzie.net

Director's Message



Hello everyone,

the Seabrook McKenzie Centre continues to be in good financial health – thank you for your wonderful support. The outputs table presented at the August 25th AGM showed that in 2021 there were 1015 psycho-educational testing sessions. We had 619 clients: 85% were new clients and 78% received additional subsidies to help them meet our already low costs. So, it is clear we are able to support the SMC Trust's charitable purpose as well as being financially sustainable.

We tried a new format for the AGM, welcoming various stakeholders to collect a variety of ideas to construct a strategic plan for the next 5 years. Just under 30 people came including parents, assessors, other employees, teacher-tutors, and all the Trust Board members. Small groups shared ideas which are now collated and ready for the Trust Board to consider on Planning Day in October.

We are yet to appoint a replacement Occupational Therapist as Georgina left to take up a more lucrative role. We have a new Centre Manager, Roslyn, starting soon. Fortunately, we will keep our current manager Louisa on the staff in Client Records and Administrative Support. Ashleigh, currently in Client Records, is then freed up to do more assessments. I am delighted by all appointments!

The waiting list for assessment is gradually reducing, with the addition of assessors Ashleigh and Elaine. Rebecca travels to Ashburton to assess weekly. Sam is assessing students on-site at Ara to make the service more accessible for them.

The Three Week Intensive course continues to be popular with Sharon's appointment as the sole teacher-tutor. She has made welcome changes to the classroom. Thank you to Ruth who retired from co-teaching the Intensive with me.

The Small Group sessions with Mary continues to have a full roll. Mary has liaised with some of the mainstream schools her students attend, promoting professional development in Specific Learning Disabilities for the schools.

Hester M. Warren



Three Week Intensive Course: The Three Week Intensive is tailored, one on one tuition with a specialist teacher for students who would benefit from a 'boost' in their learning.

Above: Sharon with a student in the reorganized classroom

“

I don't remember what I've been taught. I only remember what I've learned.

”

Arthur Brown in *The Solid Mandala* by Patrick White



SMC NOTICEBOARD



Sent: Wednesday, 16 February 2022 11:40 AM
To: Rebecca
Subject: Assessment

Thank you so much for everything on Friday Rebecca,

You and Elaine made my daughter and I feel very welcome and it was so great to have such fabulous people supporting through this assessment.



INSTANT RAFFLE
 \$3 per ticket
 or 4 for \$10



Sent: Friday, 20 May 2022 11:40 AM
To: SMC Info <info@seabrookmckenzie.net>
Subject: Re: Assessment

Morning,

Huge big thank you for everyone there, what an amazing centre and I feel so grateful to have come through there yesterday xx

Thank you

A—

Sent: Tuesday, 5 July 2022 3:04 PM
To: SMC Info <info@seabrookmckenzie.net>
Subject: Donation

Hi Team,

Just letting you know I have deposited a small donation into your bank account today.

Seabrook McKenzie was a real blessing to me many years ago when I was struggling with learning difficulties.

Kind Regards,

T—

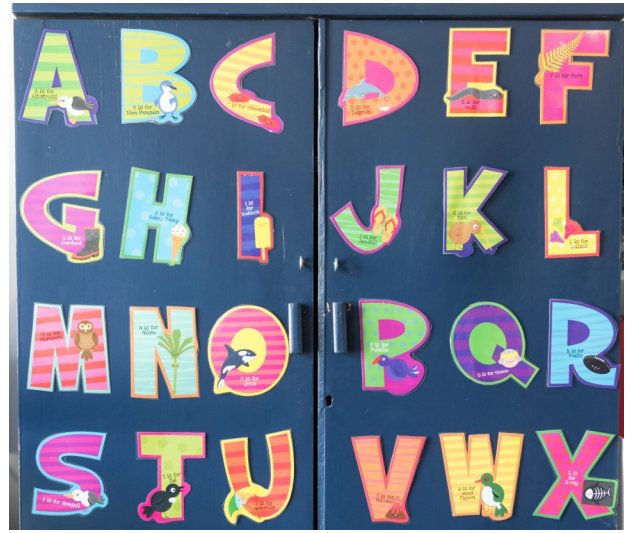
This lovely message was accompanied by a \$500 donation! It also turned out that T had originally been taught by Hester, so she was delighted to get in touch.

—WANTED—
 Occupational
 Therapist
 Inquire within

Subsidised assessments

An assessment of Specific Learning Disability costs the Centre almost \$800 to perform, but we do not pass the whole cost on to our clients—every family receives a subsidy to keep our services affordable, with additional subsidies for those on low incomes.

SLD can run in families, and there can be a cycle where parents who were not supported in their own education can now not afford the help their children need. We aim to break this cycle, but we can only achieve this through grants and donations—thank you so much for helping these students access professional assessments!



THANK YOU TO OUR SUPPORTERS



Balance Agrinutrients

Blogg
Charitable Trust

Bunnings Riccarton

The Canaan Foundation

Charles Duncan
Charitable Trust

Chenery Memorial Trust

Christchurch Casinos
Charitable Community
Trust

Christchurch
City Council 

The Clegg Family
Charitable Trust

Cranleigh Harper Barton
Charitable Trust
*(managed by Perpetual
Guardian)*

David Ellison Charitable
Trust *(administered by
Public Trust)*

David Levene
Foundation

Dimock Charitable Trust

E B Millton
Charitable Trust

The Elizabeth Ball
Charitable Trust

FabTek

Glenice & John
Gallagher Foundation

Innovation in Education
*(managed by Perpetual
Guardian)*

J M Butland
Charitable Trust

John Ilott
Charitable Trust
Jones Foundation

The Kirby Trust



Lamar Charitable Trust



The Masfen Foundation



Maurice Carter
Charitable Trust

The Michael Synnott
Charitable Trust

National Assistance
Fund

New Zealand Charitable
Foundation *(managed by
Perpetual Guardian)*



Philip Brown Fund

Philip Verry
Foundation

The R D Butland
Charitable Trust

Shacklock
Charitable Trust

The Toassist
Charitable Trust



The Wilks
Charitable Trust

Withiel Fund

Will you help someone with SLD receive the support they need? Donations over \$5 may qualify for tax rebates.

☺ \$25 every little bit helps

☺ \$110 subsidises an assessment

☺ \$500 pays for a term of tuition

☺ \$1400 covers 20 small group sessions

☺ \$2200 funds a three week intensive

☺ \$_____ to help where most needed

You can make your donation via internet banking: Seabrook McKenzie, ANZ 06 0257 0253986 00. Please contact us to let us know your donation is on the way or to request further information. Thank you!